






ThermTec

Taking You to Explore the Nature

-  Large 1.03" 2560*2560 OLED
-  AI Calibration Enhanced Image Stability
-  Central Turret Focus
-  1200m Precise Laser Ranging
-  2600m Long Detection Range
-  Recoil Activated Video
-  Silent Lens Cover



ORYX-L Series

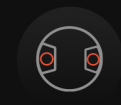
Thermal Imaging Scope

The new ThermTec Oryx-L redefines thermal scope excellence with built-in LRF, uniquely designed focus system, NETD \leq 15mK high sensitivity, and large 1.03" 2560x2560 resolution OLED. Oryx-L, made for professionals who demand the best.

Innovate Your Way to Hunt



NETD \leq 15mK



Innovative Built-in LRF



Redesigned Focus System

ThermTec

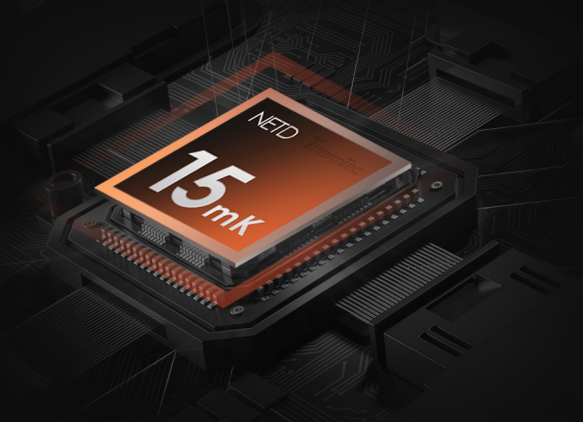
ThermTec Technology Co., Ltd.
Email: info@thermeyetec.com
Website: <https://www.thermeyetec.com>

Follow us at
"ThermTec Outdoor"



15mK Ultra Clear Image

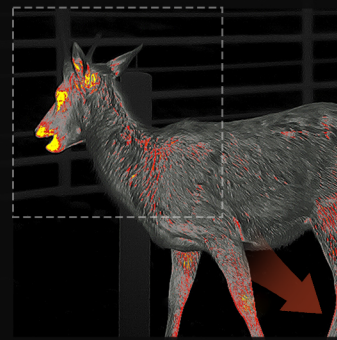
Oryx-L's high-sensitivity thermal detector captures subtle temperature differences for crisp, detailed images in any weather conditions.



Unparalleled Clarity and Details

Experience unparalleled clarity and details, and reduced visual fatigue with a 2560x2560 resolution 1.03" OLED display.

1.03"
2560x2560
resolution



Consistently Clear & Stable Image

ThermTec AI calibration with shutterless image system ensures stable image quality over changing environments.



ThermTec AutoSight System (TASS)

Auto switch to base magnification for the widest field of view after a high-magnification shot, so you can stay locked on your prey.



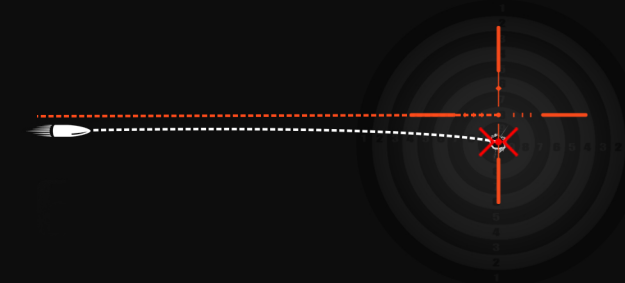
Central Turret Focus System

The unique central turret focus system makes focusing easier and more comfortable compared to traditional lens-mounted design.



Accurate Long-Range Shooting

Accurate shooting at any distance with automatic angle compensation analysis and color and style of the suggested ballistic mark.



Innovative Built-in LRF Module

The built-in LRF system ensures maximum energy intake for optimal image quality while ranging up to 1,200m.



Classic Zoom Design

A dedicated zoom control with optics-inspired design offers a more familiar, precise operation.

8 Hours Continuous Operation

Up to 8 hours of runtime each one - powered by upgraded 21700 rechargeable and replaceable batteries.



Specifications

Model	Oryx-L 635	Oryx-L 650
Microbolometer		
Type	Uncooled	
Resolution	640x512	
Pixel pitch	12μm	
NETD	≤15mK	
Spectral range	8-14μm	
Frame rate	50Hz	
Detection Range	1800m	2600m
Optics		
Objective lens	35mm, F0.8	50mm, F0.9
Field of view	12.5° x 10°	8.8° x 7.0°
m @100m	21.9x17.6	15.4x12.3
Magnification	2.6X	3.7X
Digital Zoom	1.0-4.0X zoom	
Eye relief	60mm	
Exit pupil	6mm	
Diopter	±5D	
Aiming Reticle		
Reticle	7	
Reticle color	6	
Display		
Type	AMOLED	
Resolution	2560x2560	
Display size	1.03 inch	
Color palette	6	
Function		
Max. recoil power on rifled weapon	6000J	
Mounting brackets on weapon	Standard 30mm rings	
RAV	Yes	
Audio Recording	Yes	
Manual zeroing	Yes	
Zeroing profiles	6	
Freeze Zeroing	Yes	
Picture-in-picture	Yes	
Laser ranging	1200m	
Ballistic Calculator	Yes	
Image calibration	Manual/Auto	
Video Recorder		
Photo/video playback	Yes, 1280*1024	
Inbuilt memory	64GB	
Interface		
Type C	Data transfer, Battery charge	
Hotspot	Yes	
Battery		
Battery type	Replaceable, 1*21700, 6000mAh	
Battery life	8h	
Environment		
Operating temperature	-20°C to +50°C	
IP rating	IP67	
Weight, g	1050±5	1100±5
Size, mm	385(L)x93(W)x77(H)±5	397(L)x87(W)x74(H)
Accessories		
External cable	USB data cable	
Other accessory	2x standard 30mm rings, eyeshade and etc.	